

# Source to Tap Networking Event

Presentation on :

‘Source to Tap’

Diane Foster  
Project Manager



WELCOME to the

# Source To Tap Project Networking Event

Diane Foster

Project Manager  
Source to Tap





# Diane Foster Project Manager Source to Tap

## 2017 to 2021

**Interreg**   
EUROPEAN UNION

Northern Ireland - Ireland - Scotland

European Regional Development Fund



Department of  
**Agriculture, Environment  
and Rural Affairs**  
[www.daera-ni.gov.uk](http://www.daera-ni.gov.uk)



An Roinn Tithíochta, Pleanála  
agus Rialtais Áitiúil  
Department of Housing, Planning  
and Local Government

# Partners & Funders





Department of  
**Agriculture, Environment  
and Rural Affairs**

[www.daera-ni.gov.uk](http://www.daera-ni.gov.uk)

A project funded by

**Interreg**



EUROPEAN UNION

**Northern Ireland - Ireland - Scotland**

European Regional Development Fund



**An Roinn Tithíochta, Pleanála  
agus Rialtais Áitiúil**

Department of Housing, Planning  
and Local Government

Project Partners

northern ireland  
**water**



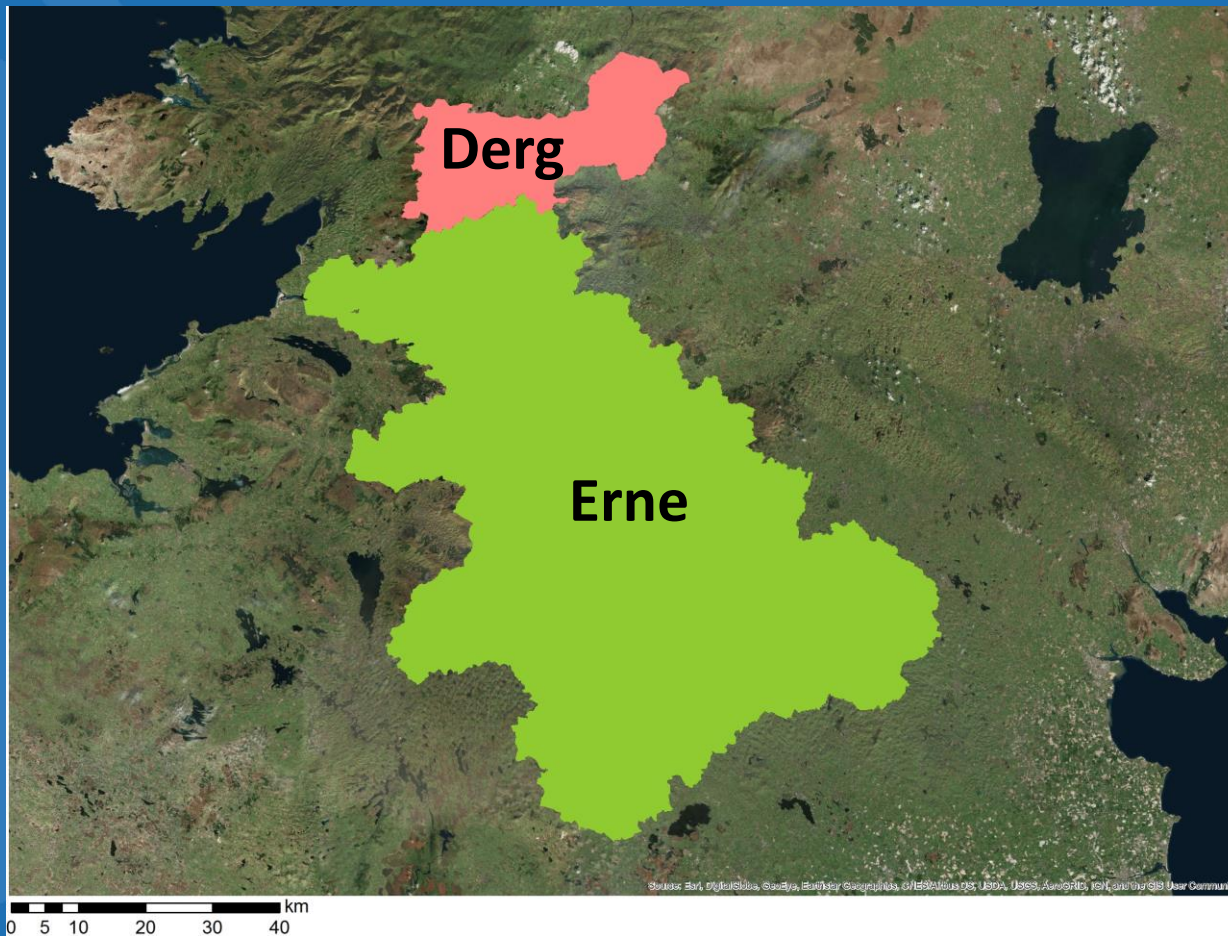
Delivering what matters



The 'Source to Tap' project is supported by the European Union's INTERREG  
VA Programme, managed by the Special EU Programmes Body (SEUPB).

# Project Area & Aim

# Project Area



# Project Aim

“to explore sustainable, cost effective measures to reduce pollution in shared catchments, and to secure safe drinking water sources and contribute to improvements in cross border raw water quality.”



Leading to the production of a SCAMP

# Deliverables

# The project will cover five areas



Best practice will help form a Sustainable Catchment Area Management Plan (known as a SCAMP), so that what is learnt, and is shown to work well, can be replicated in other drinking water source areas in the United Kingdom, Ireland and beyond.



# The project focus is

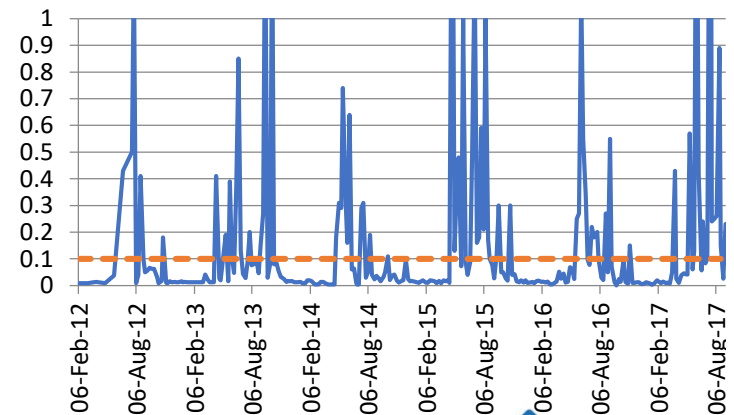


💧 Pesticides (MCPA)

💧 Colour

💧 Turbidity

MCPA concentration at  
Derg Raw Water Inlet 2012 - 2017



Drinking water  
limit

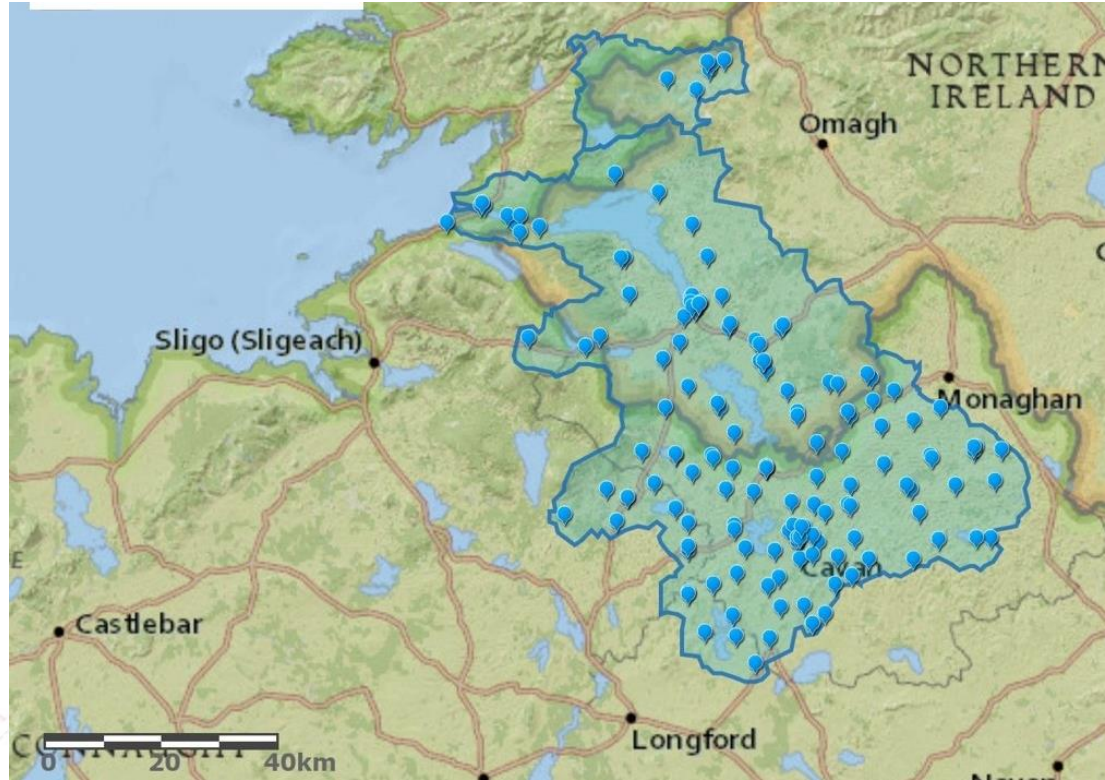
# Education and Outreach Deliverables





# Education and Outreach Deliverables

- 💧 80 schools over the life of the project
- 💧 48 Information Exchange Events
- 💧 24 Road show Events



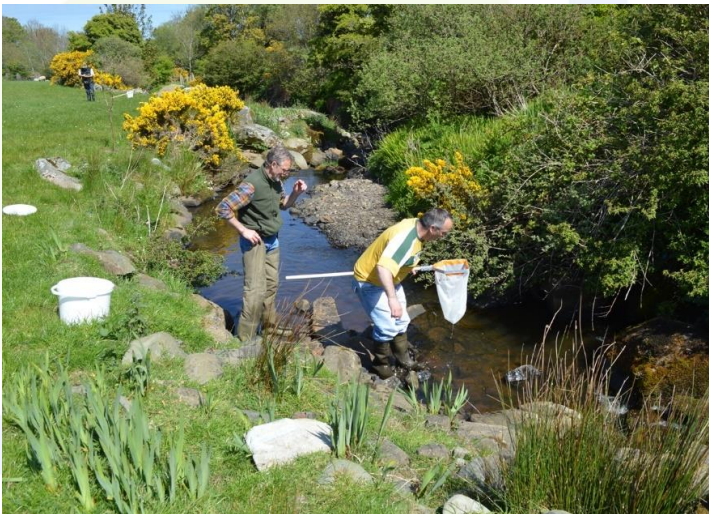
# Community Engagement



# Citizen-science water quality monitoring



- 💧 36 volunteers trained to monitor river fly life
- 💧 Community-led water quality monitoring team
- 💧 Knowledge legacy...beyond the life of the project







# PILOTS



# Forestry and Peat Pilots



**How?** Restoration of 135ha of previously afforested peat bog areas adjacent to watercourses on Forest Service NI land to provide peat dams preventing sediment run-off into rivers in the Erne and Derg Catchments.



**How?** Trialling various mitigation measures to reduce soil erosion and sediment run-off to our rivers and lakes from forestry activity through the construction of settlement ponds/sediment traps of different sizes and filtering of the runoff from the forestry operation sites.



# Farming for Water Pilot



**How?** Trialling a cross-border pilot Land Incentive Scheme (LIS) in the River Derg catchment, providing incentives to land owners and farmers to deliver more sustainable land management to reduce run-off from herbicides and soils.



**Diane Foster**  
**[diane@sourcetotap.eu](mailto:diane@sourcetotap.eu)**

**+44 (0) 7825669379**

**[lisa@sourcetotap.eu](mailto:lisa@sourcetotap.eu)**  
**[lyndsey@sourcetotap.eu](mailto:lyndsey@sourcetotap.eu)**  
**[patrick@sourcetotap.eu](mailto:patrick@sourcetotap.eu)**



**Source to Tap Project Office**  
c/o Waterways Ireland Headquarters  
2 Sligo Road, Enniskillen  
Co Fermanagh BT74 7JY  
Northern Ireland



[info@sourcetotap.eu](mailto:info@sourcetotap.eu)



[www.sourcetotap.eu](http://www.sourcetotap.eu)



SourcetoTapEU



@SourcetoTapEU



sourcetotap



Source to Tap

# Source to Tap Networking Event

Presentation on :

‘Co-operation across borders for biodiversity  
(CABB)’

Katy Bell



# Co-operation Across Borders for Biodiversity

**Interreg**   
Northern Ireland - Ireland - Scotland  
European Regional Development Fund



Special EU Programmes Body  
Foras Um Chláir Speisialta An AE  
Boord O Owre Ocht UE Projects

 giving  
nature  
a home  
**RSPB**  
Northern Ireland



**Butterfly  
Conservation**



**BirdWatch Ireland**  
birdwatchireland.ie  
protecting birds and biodiversity

**northern ireland  
water**  
Delivering what matters



 giving  
nature  
a home  
**RSPB**  
Scotland





# **Timescale**

**1<sup>st</sup> January 2017**

**to**

**31<sup>st</sup> December 2021**

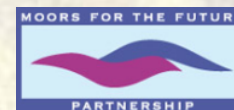
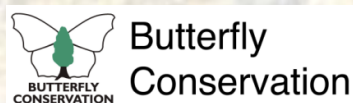
# CABB Partners





# Funding

- European Regional Development Fund (€4,935,983)
- Department of Agriculture Environment & Rural Affairs in Northern Ireland (€319,360)
- Department of Housing, Planning & Local Government in Ireland (€199,654)
- Mines Restoration Ltd
- RSPB Scotland



# **Total & Partner Costs**

## **Total Project Costs - €4.935m**

RSPB NI - €2.127m

BirdWatch Ireland - €1.331m

RSPB Scotland - €1.101m

Northern Ireland Water - €170,863

Butterfly Conservation - €193,755

Moors for the Future - €9,581

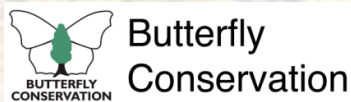


# Programme Manager

**Caroline Marshall**

**028 9069 9090**

**[Caroline.marshall@rspb.org.uk](mailto:Caroline.marshall@rspb.org.uk)**



# Objectives

## 1. Map sites and prepare 8 Conservation Action Plans.





# **Objectives cont'd**

- 2. Deliver works to support 2228ha land to attain better conservation status.**
- 3. Tangible works for priority species – Marsh fritillary, breeding waders, hen harrier.**
- 4. Share best practice.**
- 5. Develop databases to share data on priority species and habitats.**
- 6. Raise community awareness.**



## Education

*Poster highlighting the benefits of blanket bog.*

*Calendar for landowners.*

*RSPB education team.*

*Events.*

## Community engagement

*Landowner visits and events.*

## Deliverables

*Lough Erne – 252ha rush cutting*

*Conservation Action Plan*

- Grazing regime*
- Wildfire response plan*
- Peat cutting*

*Capital works*

- BWI: Fencing on Dunragh/Pettigo SAC*
- Butterfly Conservation – on marsh  
fritillary land*



# Blanket Bog Restoration

## 2228ha Target Areas

- Garron Plateau (444ha)
- Muirkirk (435ha)
- Pettigo / Dunragh (900ha)
- Ox Mountains (449ha)

## Other habitat & species management

- Montiaghs Moss (151ha)
- Fermanagh (252ha)
- Donegal machair sites
- Gruinart sea wall
- Marsh fritillary



# Contact details

Katy Bell – Pettigoe Plateau: [katy.bell@rspb.org.uk](mailto:katy.bell@rspb.org.uk)

Darren Houston – Garron Plateau: [Darren.Houston@rspb.org.uk](mailto:Darren.Houston@rspb.org.uk)

Cathryn Cochrane – Montiaghs Moss:  
[Cathryn.Cochrane@rspb.org.uk](mailto:Cathryn.Cochrane@rspb.org.uk)

Brad Robson – RSPB Fermanagh: [brad.robson@rspb.org.uk](mailto:brad.robson@rspb.org.uk)

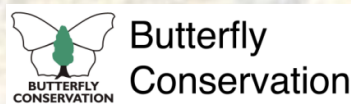
Rose Cremin – Butterfly Conservation: [rcremin@butterfly-conservation.org](mailto:rcremin@butterfly-conservation.org)

Anita Donaghy – Birdwatch Ireland: [adonaghy@birdwatchireland.ie](mailto:adonaghy@birdwatchireland.ie)

Nicholas Duff – BWI: [nduff@birdwatchireland.ie](mailto:nduff@birdwatchireland.ie)

Rob Wheeldon – BWI: [rwheeldon@birdwatchireland.ie](mailto:rwheeldon@birdwatchireland.ie)

Daniel Moloney – BWI: [dmoloney@birdwatchireland.ie](mailto:dmoloney@birdwatchireland.ie)







**Questions ?**





# Source to Tap Networking Event

Presentation on :

‘Lough Erne Landscape Partnership’

Teresa O'Hare



**Vibrant sustainable rural economy, a healthy population and a functioning ecosystem.**

**LELP Summer 2018 – 2023**

## The Lough Erne Landscape Partners going forward into the Delivery Phase





- **Outcomes for heritage:**

- *Heritage will be in better condition*
- *Heritage will be better identified / recorded*
- *Heritage will be better understood / interpreted*

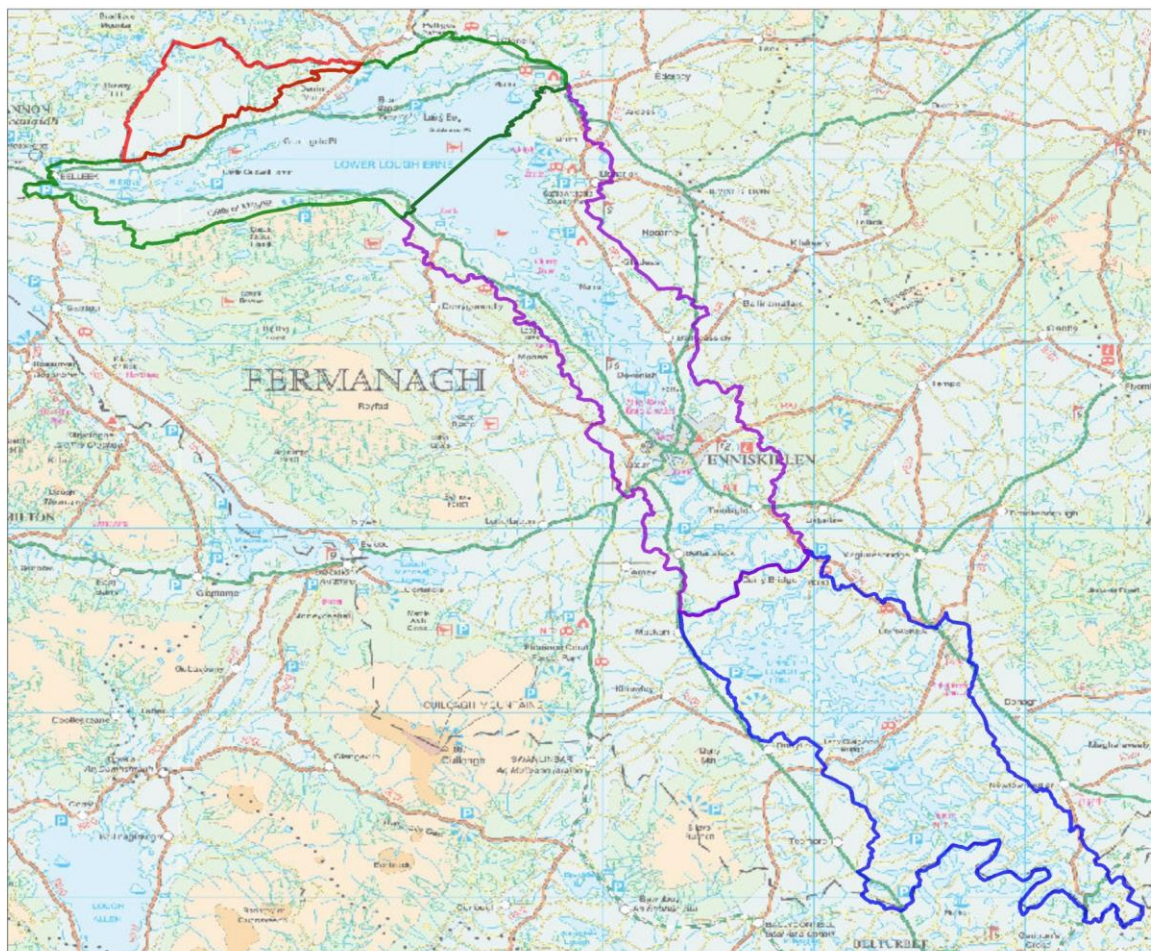


- **Outcomes for people:**

- *People will have changed their attitudes and behaviour*
- *People will have had an enjoyable experience*
- *People will have volunteered time*

- **Outcomes for communities:**

- *Environmental Impacts will be reduced*
- *More people and a wider range of people will have engaged with heritage*
- *Your local area/community will be a better place to live, work or visit*



### Landscape Character Areas

**Legend:**

- Croagh and Garvary River
- Lower Lough Erne
- Enniskillen
- Upper Lough Erne

**Acknowledgements & notes:**  
 Created by: RSPB  
 © Crown Copyright. All rights reserved. RSPB Permit Number: 60271.

N

Map scale = 1:262,783      Date printed: 01/07/2016

giving  
nature  
a home

# Engagement & deliverables



- Commissioned reports
  - Build Heritage Audit and opportunities of action report
  - Conservation Land Management
- Area wide scoping exercise to identify potential projects
- Development of the 24 project business plans for LCAP inclusion.
- Round 2 submission to HLF Nov 2017 for approval
- **ONGOING** . *Development of governance, fund raising strategy , projects support , furtherance of partnership working at all levels.*

**LELP Office**  
**Waterways Ireland HQ**  
**2 Sligo Road**  
**Enniskillen**

Tel 028 66327109

Email

[info@lelp.org.uk](mailto:info@lelp.org.uk)

[www.lelp.org.uk](http://www.lelp.org.uk)



# Source to Tap Networking Event

Presentation on :

‘Waters and communities’

Bernie O’Flaherty

# Source to Tap

## Project Networking Event March 2018

### **The Waters and Communities Office**

*Our Mission: 'To support communities and work with public agencies and stakeholders to protect and care for the natural waters of Ireland'*

**Bernie O'Flaherty**  
[boflaherty@lawco.ie](mailto:boflaherty@lawco.ie)





# The Waters and Communities Border Team

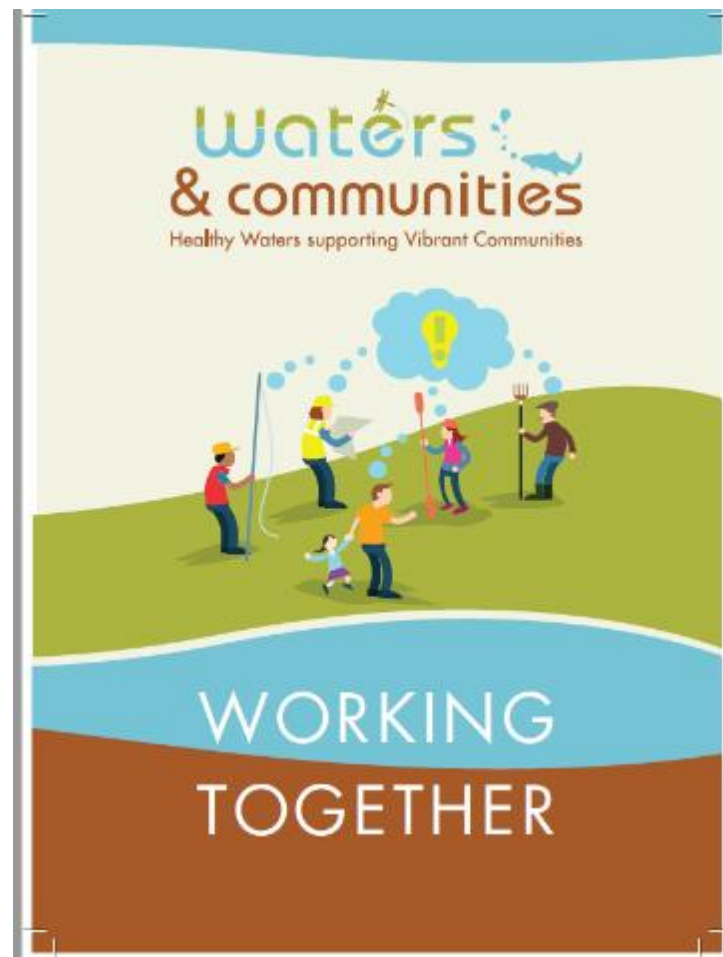
- Regional Coordinator: Bernie O'Flaherty
- Community Water officers:
  - Karen Kennedy (Sligo, Leitrim & Longford)
  - Gretta McCarron (Monaghan, Cavan & Louth)
  - Jimmy McVeigh (Donegal)

*Leaflets & Business Cards Available*



# Waters and Communities or LAWCO - background

- Set up in 2016
- A Local Authority **shared service**
- Funded by DHPLG until 2020/2021
- Why? Water Framework Directive. RBMP. Local Authority's new role **coordinating catchment management and public participation**
- Office is led by Tipperary & Kilkenny LAs with 18 staff in total
- Part of a new national **collaborative approach**





# Public Participation in Water Management

Catchment management is about **people, nature and water**

- BUT people have become disconnected from waters
- Waters are not valued - often bad news stories e.g. flooding or Irish Water issues
- We don't have a strong ethos in volunteering for nature
- Our experience - public meetings on WFD or water quality - don't work
- We needed to be imaginative, look for 'hooks' .....a work in progress



# Our Approach

- Reconnect people to their local waters and catchments
- Build awareness
- Promote stewardship /citizen science
- Promote partnerships, projects and initiatives
- Priority areas of the RBMP - more focus

General and targeted activity



# Starting Out: Target Groups

- **Public Participation Networks (PPN)**
- Tidy Towns Groups
- Environmental Groups, Anglers
- **Rural & Community Development sector**
- Farming sector
- National organisations
- Local Authority: staff and elected members
- **Public bodies**
- The public...

Inform many, involve some  
and empower champions

## Networking For Nature Event

LAWCO introduces water project ideas to Tidy Towns Groups – Leitrim 2017, Longford and Cavan 2018



**TidyTowns  
Special Award**



# Creating a community 'Vision' for the Rivers of Dundalk Bay



Using Ripple method developed by Ballinderry Rivers Trust

# Water Heritage Day - reinstated in 2017



**NATIONAL  
HERITAGE  
WEEK**

An Chomhairle Oidhreachta  
The Heritage Council



[Plan Your Event](#)

[Learn More](#)

[About](#)

[News](#)



## Heritage Council Grant-Aided Projects

Browse through some of the projects previously funded through our grants

## Heritage Week 2018

Heritage Week 2018 is all about Sharing Stories. Sharing all our heritage stories in new ways, with new people.

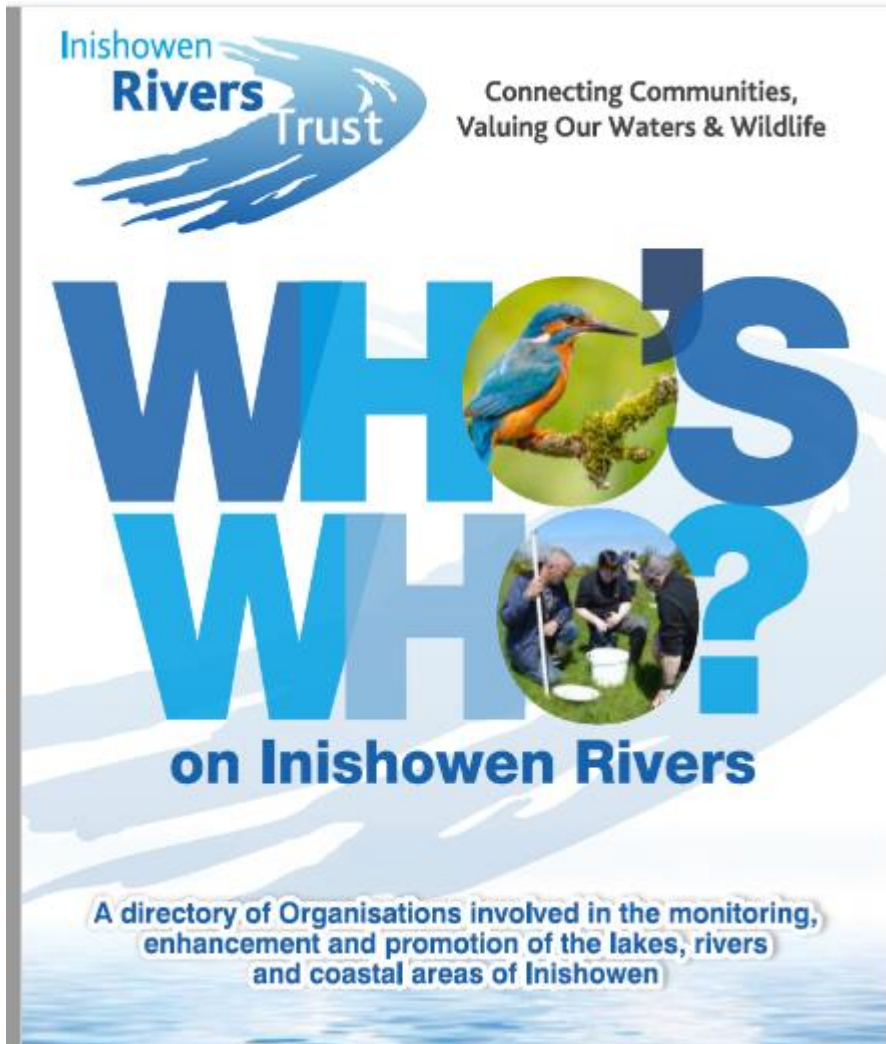
## @heritageweek



RT @FriendsMerlinWD: An Evening with Fionn and Jonathan Angus The Nest Area #MerlinWoods #Galway 7-8pm Wed 6th December #NaturalDecemeb be...



# Building trust & relationships



- Building relationships between community groups, organisations and public bodies
- Inishowen Rivers Trust Development – Who's Who event and booklet produced
- Repeated in the River Moy & Lough Melvin Catchments in 2017 & Dundalk Bay Rivers Catchment in 2018
- **Build Relationships between projects**



# Recommended Areas for Action

[www.watersandcommunities.ie](http://www.watersandcommunities.ie)



www.catchments.ie

# Welcome to Catchments.ie - Water from source to sea.

catchments.ie shares science and stories about Ireland's water catchments, and people's connections to their water.

## Tweets by @EPACatchments

EPA Catchments Retweeted



**Loughs Agency**  
@ArtNiven

River Finn Catchment Donegal (Impacts and Opportunities) [youtu.be/mxL2PEdCmyQ](https://youtu.be/mxL2PEdCmyQ)

**YouTube** @YouTube



23h

Issue 7: Winter 2017

Online Edition: ISSN 2005-8526 Print Edition: ISSN 2003-881X

## Catchments Newsletter

Integrated Catchment Management: sharing science and stories



**Catchments -  
water, heritage,  
community  
and connections**

### Inside this issue

Water Heritage Day  
The National Water  
Forum / An Fóram Uisce

What is catchment  
science?

Developing the River  
Bash Management Plan

Catchment communities  
visions for the future

Smart Farming -  
better outcomes for  
farmers, and their local  
environment

Farmyard action plans  
help bees and other  
pollinators

Modelling pesticides  
and nutrients in the UK  
and Ireland

Make more of your water, make a good team work for good.  
Partnership between the Loughs Agency and the Loughs Agency  
Partnership between the Loughs Agency and the Loughs Agency

More



# Source to Tap Networking Event

Presentation on :

‘CatchmentCARE’

Eadaoin Healy



# CatchmentCARE

Catchment Actions for Resilient Eco-systems

October 2017 to October 2022 - 5 years

7<sup>th</sup> March 2018



Department of  
**Agriculture, Environment  
and Rural Affairs**  
[www.daera-ni.gov.uk](http://www.daera-ni.gov.uk)

**Interreg**

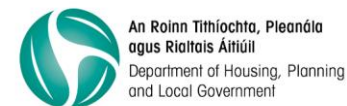
Northern Ireland - Ireland - Scotland  
European Regional Development Fund



An Roinn Tithíochta, Pleanála  
agus Rialtais Áitiúil  
Department of Housing, Planning  
and Local Government

# CatchmentCARE

- 8 Project Partners



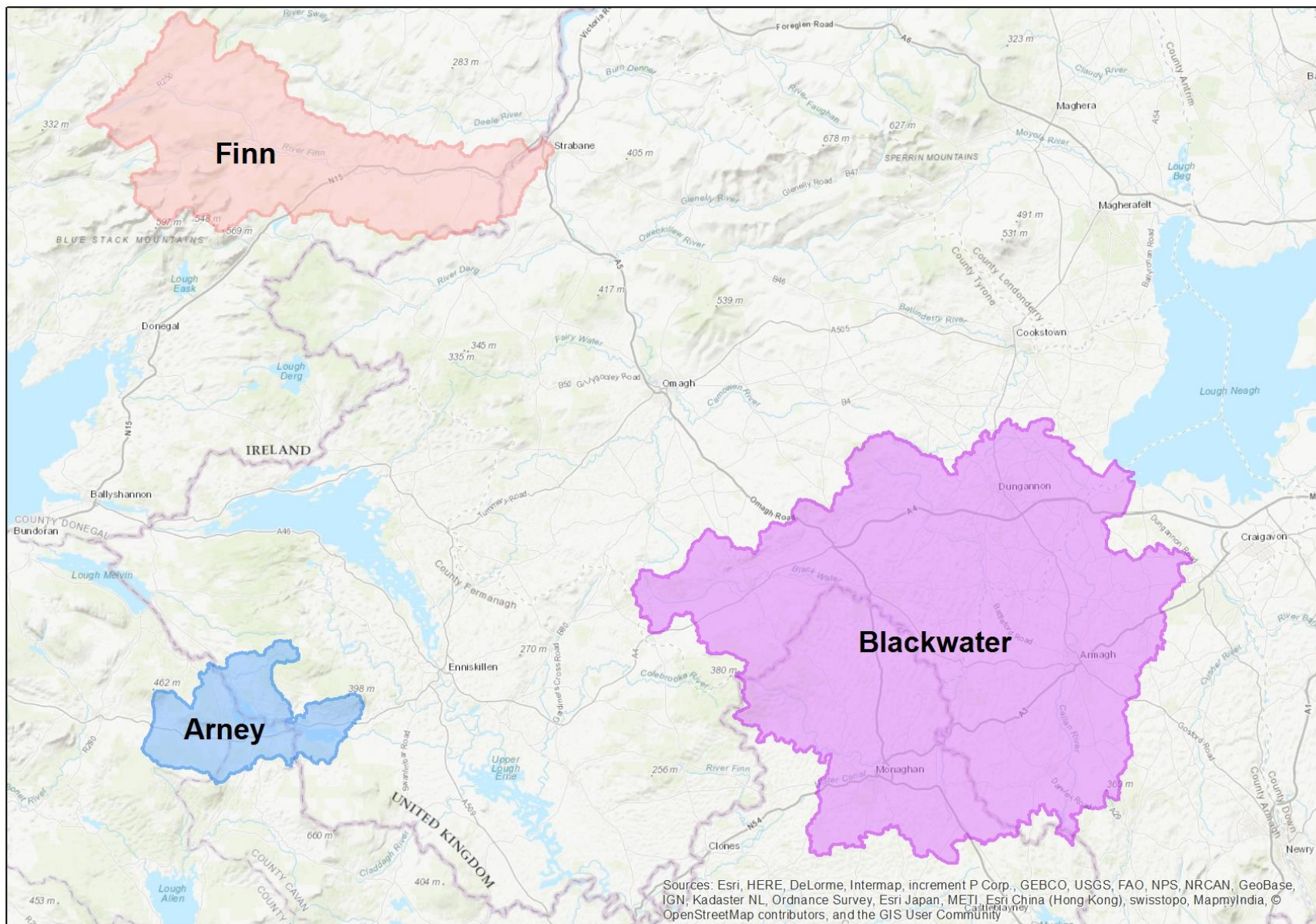
# CatchmentCARE

- ~ €13.8 million over 5 years
- EU Programme for N. Ireland, Border Region & Western Scotland
- Government of Ireland and the Northern Ireland Executive providing match funding.
- Con McLaughlin – Senior Engineer  
[con.mclaughlin@donegalcoco.ie](mailto:con.mclaughlin@donegalcoco.ie) 087 2764828
- Éadaoin Healy – Project Contact  
[eadaoin.healy@donegalcoco.ie](mailto:eadaoin.healy@donegalcoco.ie) 087 2414523

# Aims

- Establish 3 water quality improvement projects
  - Arney catchment
  - Blackwater catchment
  - Finn catchment
- Install 51 groundwater boreholes across the cross-border region





Department of  
**Agriculture, Environment  
and Rural Affairs**  
[www.daera-ni.gov.uk](http://www.daera-ni.gov.uk)

**Interreg**   
Northern Ireland - Ireland - Scotland  
European Regional Development Fund



An Roinn Tithíochta, Pleanáil  
agus Rialtais Áitiúil  
Department of Housing, Planning  
and Local Government

# CatchmentCARE Education

- Knowledge Exchange
- Training to support Capacity Building
- Changing behaviour and practices
- Project Events

# CatchmentCARE Engagement

- Governance & Engagement Sub Committee
- Catchment Community Sub Committee
- Communication and Engagement Plan

# CatchmentCARE Pilot Projects

- Incentive based scheme for community organisations
- Catchment and Farm Scale Nutrient management Studies
- Hydrological connectivity & Point Source Pollution:  
Scoping studies for willow biomass as point and diffuse pollution mitigation actions
- diffuse pollution HSA mitigation scheme using SRC willow biomass
- 1 study focused on an economic analysis of achieving the targets of the WFD



# CatchmentCARE Project Legacy

- Knowledge exchange and capacity building with local, regional and national stakeholders
- Catchment groups to continue post project
- Catchment plans that bring added value to existing WFD plans
- Groundwater borehole network
- Developing strong links with relevant agencies, stakeholders and catchment communities

# CatchmentCARE

Thank you



Department of  
**Agriculture, Environment  
and Rural Affairs**  
[www.daera-ni.gov.uk](http://www.daera-ni.gov.uk)

**Interreg**   
Northern Ireland - Ireland - Scotland  
European Regional Development Fund



An Roinn Tithíochta, Pleanála  
agus Rialtais Áitiúil  
Department of Housing, Planning  
and Local Government

# Source to Tap Networking Event

Presentation on :

‘Boa Island breeding wader project’

Michael Stinson

# Boa Island Breeding Wader Project

Michael Stinson





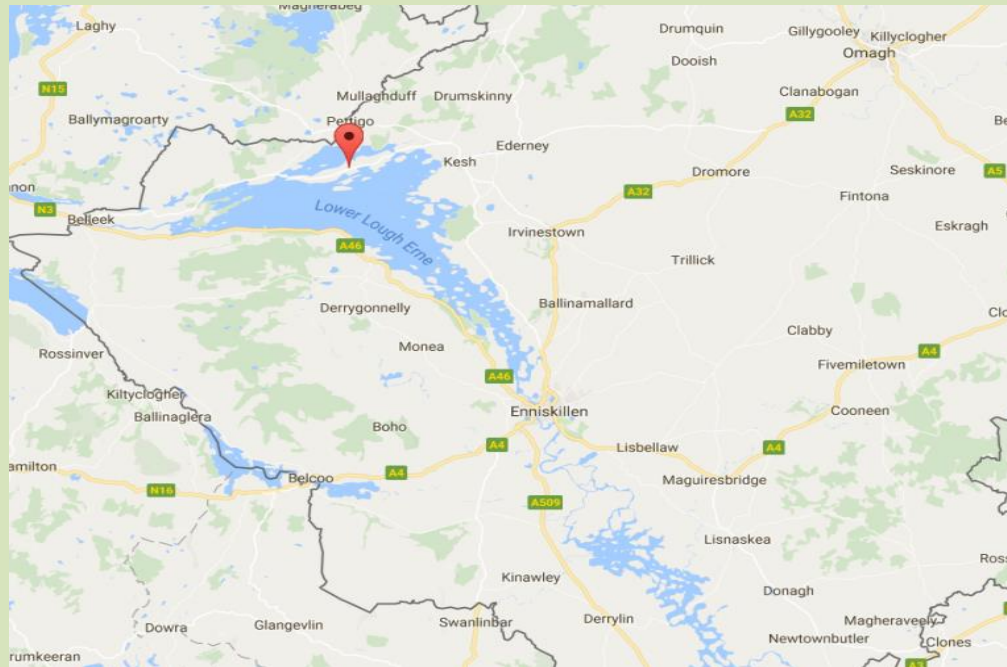
# Boa Island Breeding Wader Project

- Innovative project involving a range of partners. (Local community not eNGO driven).
- Envisioned and led by Lough Erne Wildfowlers' Council and local landowners.
- LEWC in existence for more than 25 years- conservation minded.
- Wanted to help address breeding wader issues locally.
- Support- multiple sources...DAERA, NIEA, Wildlife Habitat Conservation Trust et al.



# Boa Island Breeding Wader Project

- Site selection- Boa Island.
- Critically, local farming community aware of breeding wader species declines, but still some remaining.



# Boa Island Breeding Wader Project

- Scientific advice from *Game & Wildlife Conservation Trust*- Dr Andrew Hoodless.
- Habitat issues- scrub encroachment.
- Desertion of waders from key sites.
- Likely low productivity for remaining pairs.
- Need funding to address the issues...



# Boa Island Breeding Wader Project

- Support- multiple funding sources...
- DAERA, NIEA, Wildlife Habitat Conservation Trust et al.





[illegible]

# Boa Island Breeding Wader Project

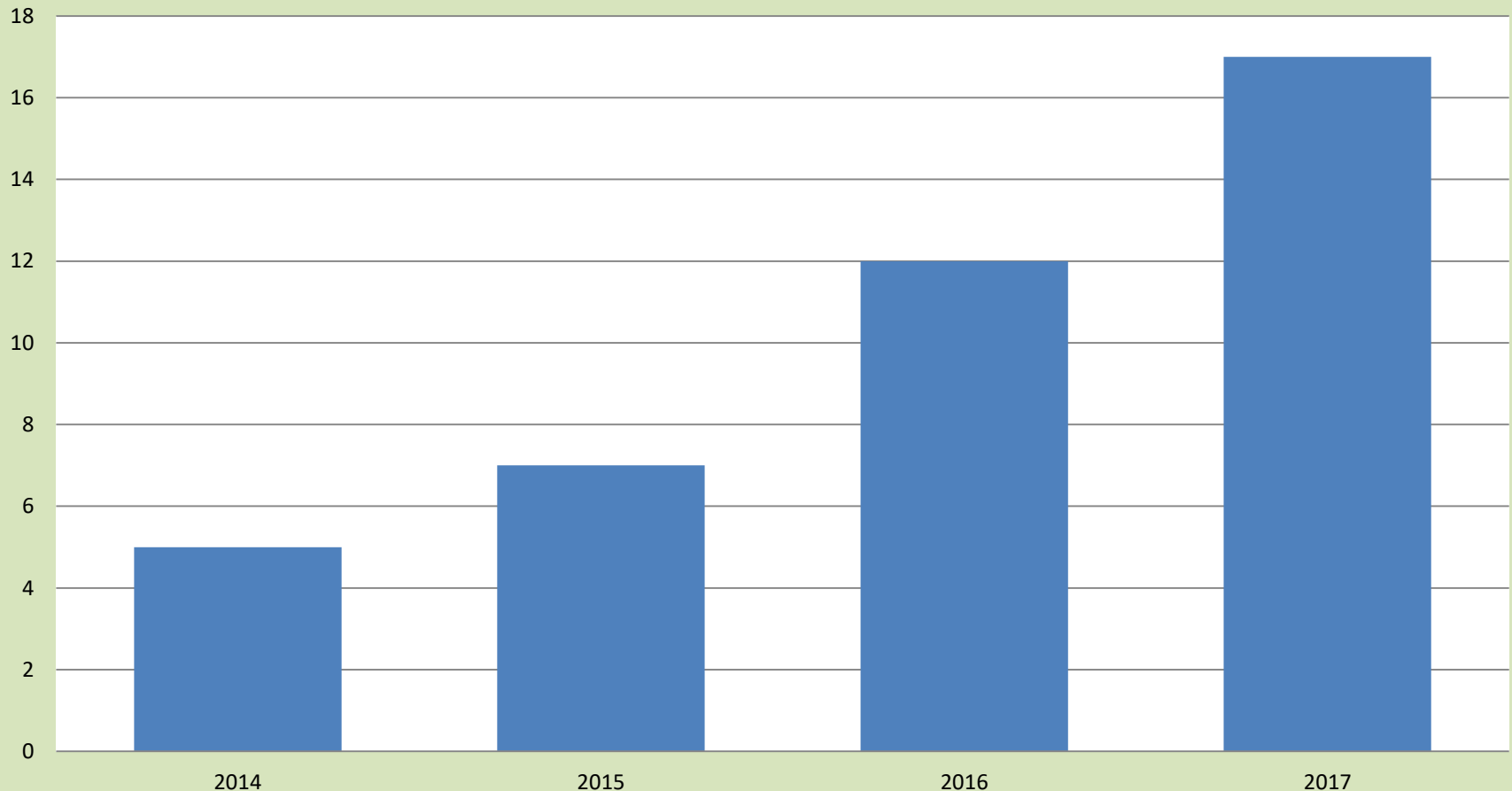
- Monitoring from the outset- *Sterna Environmental*.
- 4 key target species... Lapwing, Curlew, Redshank and Snipe.



# Boa Island Breeding Wader Project

→ 240% increase in Snipe territories

## Snipe territories Brockagh Point 2014-17





# Boa Island Breeding Wader Project

- Future: Very much a work in progress...
- Sward management - scrub re-growth.
- Education.
- Project expansion...





# Boa Island Breeding Wader Project

- Michael Stinson: 07890358239
- Follow us on Twitter: **Lough Erne Waders**  
**@BoaIsland1**
- *Any questions?*



# Source to Tap Networking Event

Presentation on :

‘Grassroots Challenge’

Andrew Gracey

# Grass Roots Challenge

Andrew Gracey  
YFCU Project Officer

**December 2020**

**@grassrootschallenge #owningit**





Northern Ireland  
**environment  
link**

**KEEP  
NORTHERN  
IRELAND  
BEAUTIFUL**



**LANTRA**



**Ulster  
Wildlife**



**Young Farmers'  
Clubs of Ulster**



**GAISCE  
THE PRESIDENT'S  
AWARD**



**THE DUKE OF  
EDINBURGH'S AWARD**

**@grassrootschallenge #owningit**

part of  
The Wildlife Trusts







**NATIONAL  
LOTTERY FUNDED**

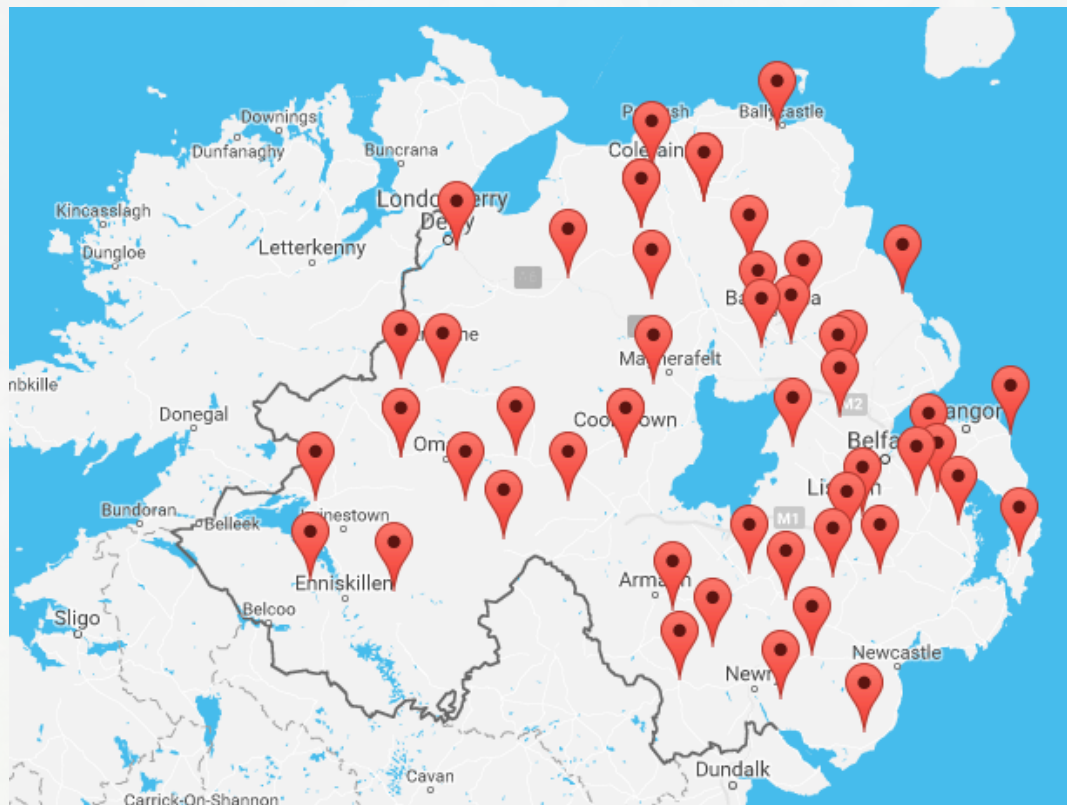


**@grassrootschallenge #owningit**

part of  
The Wildlife Trusts



**Project Manager: Alexey Janes**  
**Alexey.janes@ulsterwildlife.org**



**YFCU Project Officer**  
**Andrew Gracey**  
Covers; Armagh, Tyrone,  
Fermanagh and South  
Down

**YFCU Project Officer**  
**Shona Campbell**  
Covers; Antrim,  
Derry/Londonderry and  
North Down

**@grassrootschallenge #owningit**



# Young Farmers' Clubs of Ulster



Club Night Challenge

Wild Ideas Project

Lantra accredited  
Conservation on the  
Farm

Bespoke training

Eco Clubs

**@grassrootschallenge #owningit**

part of  
The Wildlife Trusts





# Youth Engagement Project

## Must be Fun!



## Club Night Challenge

### Birds



Do you know the rarest bird in NI?  
You'll be chuffed to find out! We tailor this session to birds in your area.

**Practical activity:**  
build bird boxes or bird feeders.

### Bees



Bees contribute over £200 million to UK agriculture, but numbers are in decline.

**Practical activity:**  
build a bee hotel or plant wildflowers.

### Hedgehogs



Hedgehogs are in trouble - they have declined by 30% in the last 10 years.

**Practical activity:**  
create a hedgehog home or tunnel.

### Bats



Can you name the eight species of bats in NI?  
You will be able to after this session!

**Practical activity:**  
become a bat detective or make bat boxes.

### Squirrels



Our iconic reds have an uncertain future.  
What can be done to help?

**Practical activity:** make red squirrel feeders  
or take part in a squirrel survey in your area.

### Minibeasts



From caterpillars to woodlouse, what do you know about our local minibeasts?

**Practical activity:** create your own bug chalet, micro pond or mini-beast hotel.

Goldfinch on feeder © D Moore, Bat visit at Donaghadee YFCU, Kells & Connor YFCU bee hotel, Red squirrel © R Bowler, Ballywalter YFCU hedgehog house, Killea YFCU bug chalet

@grassrootschallenge #owningit



## Wild Ideas



**@grassrootschallenge #owningit**



# Conservation on the Farm: Northern Ireland

- Theory followed up by actual examples on a farm
- Features for conservation
- Fertiliser application
- Pest Control
- Environmental Farming Scheme support



@grassrootschallenge #owningit





### Transport

- Cycling lessons
- Promote car sharing
- Road safety



### Global Citizenship

- Partner with a global young farmers
- Global agricultural issues



### Biodiversity

- Any wild ideas project



### Healthy Living

- Encourage healthier eating
- Outdoor activities/fitness
- Healthy home management?



### Water

- Toilet Hippo
- Timer
- River conservation



### Energy

- LED bulbs
- Turn off Lights and IT equipment
- Don't leave things on standby



### Waste and Litter

- Start recycling
- Cut down on waste
- Litter art

**@grassrootschallenge #owningit**





**@grassrootschallenge #owningit**



# Duke of Edinburgh's Award



Volunteering

Skills

Expedition

Residential



@grassrootschallenge #owningit





@grassrootschallenge #owningit



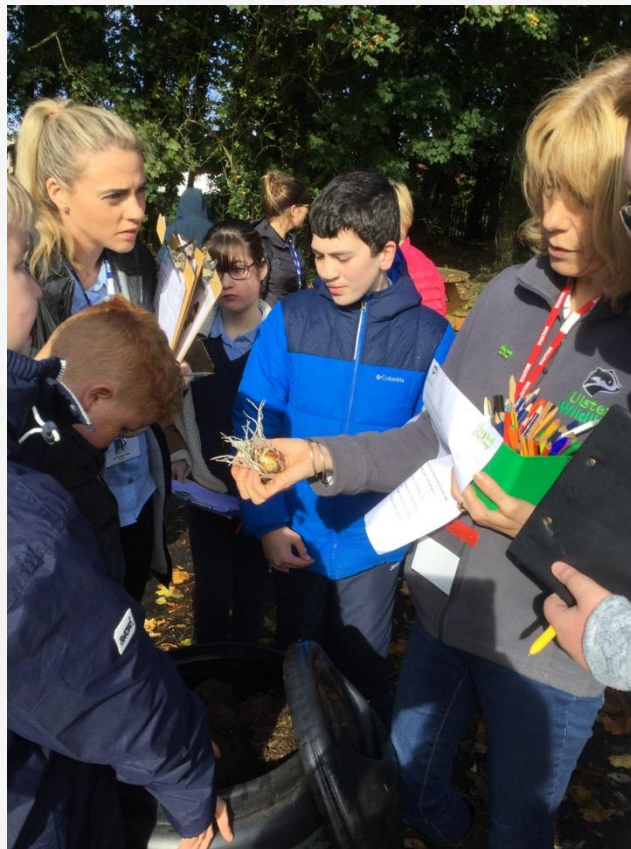
# Youth Engagement Project



## Special Schools

8 week programme

£100 grant



@grassrootschallenge #owningit

part of  
The Wildlife Trusts







**@grassrootschallenge #owningit**



# Collone YFC

Grass Roots  
Challenge



@grassrootschallenge #owningit

part of  
The Wildlife Trusts





# Collone YFC

Youth Ambassadors,  
Chloe Hawthorne  
Rebecca Brunt



# Grass Roots Challenge

@grassrootschallenge #owningit

part of  
The Wildlife Trusts





# Collone YFC



**@grassrootschallenge #owningit**



# Collone YFC



@grassrootschallenge #owningit



# Incentives



Grants

Guides

Recognition



@grassrootschallenge #owningit



# Thanks for Listening

Questions?

Find out more on:



[www.facebook.com/grassrootschallenge](https://www.facebook.com/grassrootschallenge)  
[@GrassrootsChNI](https://www.instagram.com/GrassrootsChNI)

Contact :

**Andrew Gracey:** 07816065948

[Andrew.gracey@ulsterwildlife.org](mailto:Andrew.gracey@ulsterwildlife.org)



**@grassrootschallenge #owningit**

part of  
The Wildlife Trusts



# Source to Tap Networking Event

Presentation on :

‘Blueways Project’

Eamonn Horgan





# **WATERWAY/BLEUEWAY DEVELOPMENT AND** **INVASIVE SPECIES MANAGEMENT**

**Time Frame: 2004 – Ongoing**

**A continual process of monitoring and assessment .  
Multi Agency involvement needed.**

Eamonn Horgan, Waterways Ireland  
Environment and Heritage Officer  
Kate Krane - Invasive Species Researcher



**BLUEWAY,  
DO IT YOUR WAY!**



# WATERWAYS IRELAND

- One of six North-South Implementation Bodies
- Navigation Authority
- 1000km of Inland Waterways
- 7 Navigation Systems
  - Erne System
  - Lower Bann
  - Ulster Canal
  - Shannon-Erne Waterway
  - Shannon Navigation
  - Barrow Navigation
  - Royal Canal
  - Grand Canal



# BLUEWAYS DEFINITION

"A **Blueway** is a network of approved and branded multi- activity recreational trails and sites, based on or closely linked with the water, together with providers facilitating access to activities and experiences"



**BLUEWAY,  
DO IT YOUR WAY!**





# BLUEWAYS CONCEPT

- Outdoor Recreation and "Slow" Tourism Initiative
- Easy Access to Water-Based Activity
- Multi-Activity Options; Walk, Cycle, Paddle
- Visitor-Focused Experiences -
  - Water Quality and condition is Vital!
- Clustering of Services and Hub development to protect the designated and remote habitats
- Tourism Layers; Places to Stay, Eat, Go



BLUEWAY,  
DO IT YOUR WAY!





**BLUEWAY,  
DO IT YOUR WAY!**



# WI BLUEWAY PROJECTS – NORTHERN IRELAND

- Erne - Blueway around Enniskillen
  - Spiritual Trails from the Erne - Limerick
- Bann - 63km of Historic and Industrial heritage
- Ulster Canal - Greenway.....focus now on Cycle/Walking Path. Erne- Clones Navigation
- Shannon Erne - Various towpath developments ongoing
- Others Lough Derg Shannon – Feasibility & Community Engagement (REDZ fund €200k) – To Link a Pilgrim/Spiritual Trail to the Erne
- Barrow – Planning Process Ongoing



**BLUEWAY,  
DO IT YOUR WAY!**





# PARTNERS/FUNDERS INVOLVED IN BLUEWAYS, INVASIVE SPECIES AND LAKE MANAGEMENT

- Blueways - FODC, BID (Business Improvement District), LEADER, SPORT NI etc, Funding from Dept for Infrastructure; partnership with Dept for Communities
- Invasive Species - FODC, QUEENS, NIEA, RIVERS AGENCY (DfI), Inland Fisheries (DAERA)
- LELP – HLF, National Lottery, Upper Lough Erne Region, RSPB, FODC, National Trust, NIEA, Fermanagh Community Network, Scoping and Community Engagement



**BLUEWAY,  
DO IT YOUR WAY!**



# •CHALLENGES

- Water Quality and Invasives
- Quality of the Experience totally damaged by loss in biodiversity and impacts to lake
- Research needed to determine the causes/impacts/solutions. Increased nutrification = increased weed growth = Sig. Potential loss in habitat and biodiversity
- Meeting both Customer and Natural Environment Needs



**BLUEWAY,  
DO IT YOUR WAY!**





E: [eamonn.horgan@waterwaysireland.org](mailto:eamonn.horgan@waterwaysireland.org)

T: +353-86-854-8696

E: Kate Crane (invasive Species researcher Upper Lough Erne)

[katecraneireland@gmail.com](mailto:katecraneireland@gmail.com)

0044-(0)-7732098503



**BLUEWAY,  
DO IT YOUR WAY!**

